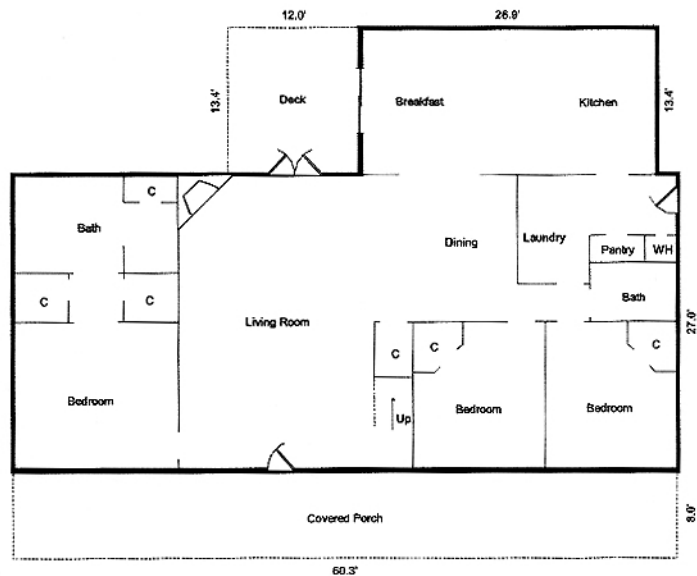
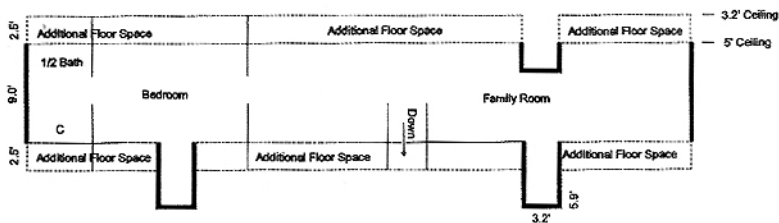


Upper Level



Main Level

AREA CALCULATIONS SUMMARY			
Code	Description	Net Size	Net Totals
GLA1	Main Level	1988.6	1988.6
GLA2	Upper Level	572.0	572.0
P/P	Covered Porch	482.4	
	Deck	160.8	643.2
OTH	Additional Floor Spc	112.3	
	Additional Floor Spc	30.0	
	Additional Floor Spc	30.0	
	Additional Floor Spc	74.8	
	Additional Floor Spc	30.0	277.0
Net LIVABLE Area		( Rounded )	2561

LIVING AREA BREAKDOWN		
	Breakdown	Subtotals
Main Level	27.0 x 60.3	1628.1
	13.4 x 26.9	360.5
Upper Level	9.0 x 12.0	108.0
	3.2 x 5.9	18.9
	3.2 x 12.4	39.7
	6.5 x 45.1	293.2
	2.5 x 44.9	112.3
7 Items	( Rounded )	2561

Upper Level	GLA2
9.0 x 12.0 =	108.0
3.2 x 5.9 =	18.9
3.2 x 12.4 =	39.7
6.5 x 45.1 =	293.1
2.5 x 44.9 =	112.2
Area total ( Rounded ) = 572	

Additional Floor Spc	OTH
2.5 x 44.9 =	112.3
Area total ( Rounded ) = 112	

Additional Floor Spc	OTH
2.5 x 12.0 =	30.0
Area total ( Rounded ) = 30	

Additional Floor Spc	OTH
2.5 x 12.0 =	30.0
Area total ( Rounded ) = 30	

Additional Floor Spc	OTH
0.2 x 2.5 =	0.5
2.5 x 29.7 =	74.3
Area total ( Rounded ) = 75	

Additional Floor Spc	OTH
2.5 x 12.0 =	30.0
Area total ( Rounded ) = 30	

Main Level	GLA1		
	27.0 x	60.3 =	1628.1
	13.4 x	26.9 =	360.5
Area total ( Rounded ) =			1989

Covered Porch	P/P		
	8.0 x	60.3 =	482.4
Area total ( Rounded ) =			482

Deck	P/P		
	12.0 x	13.4 =	160.8
Area total ( Rounded ) =			161